



# GMT MONTHLY MEMBERSHIP PROGRESS REPORT

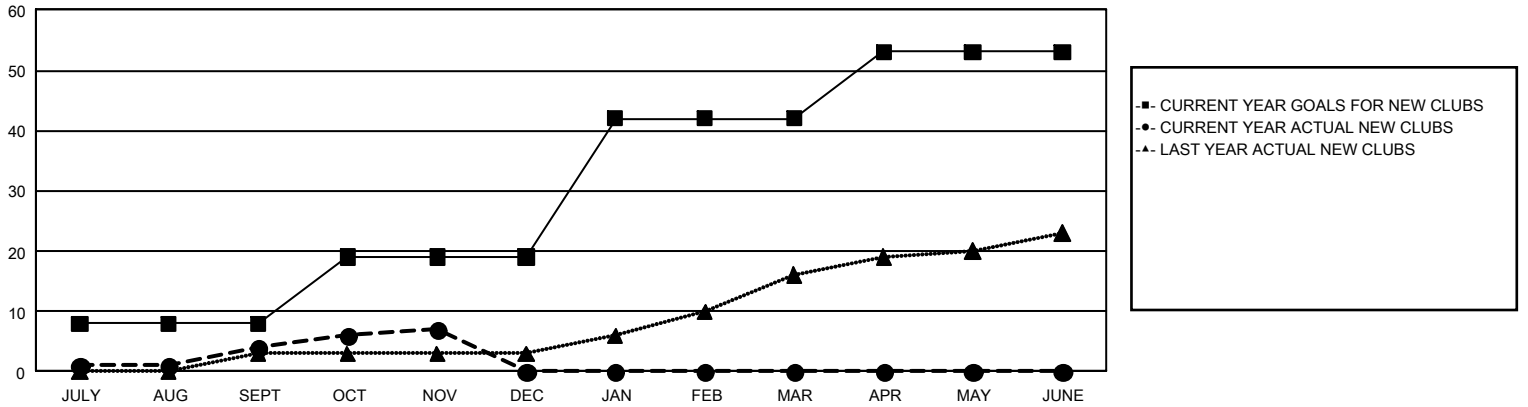
## GAT Constitutional Area 5 - Japan

Results as of: 11/30/2024

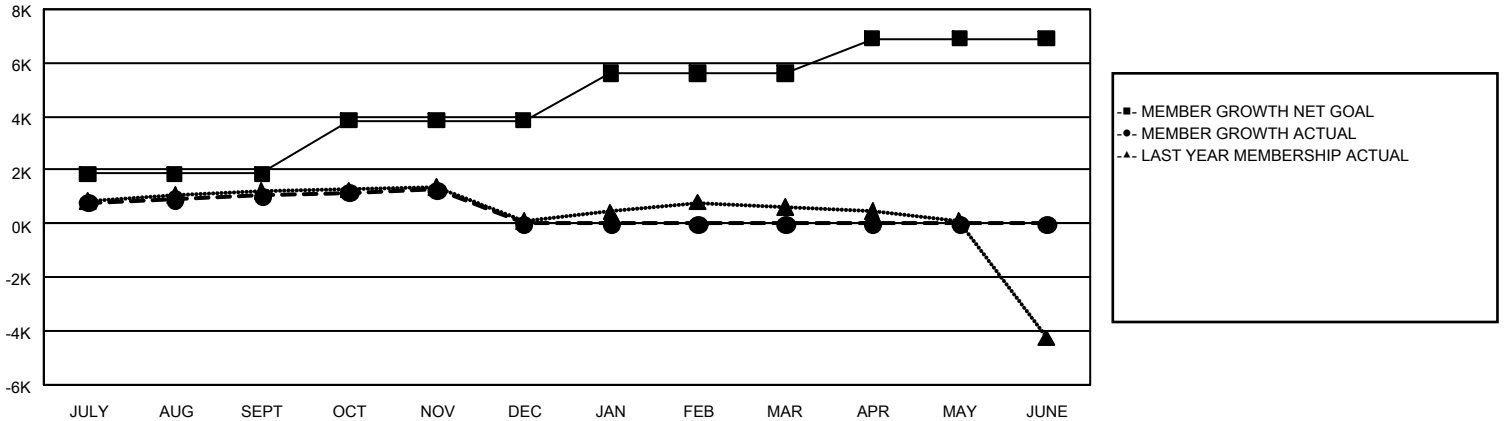
REPORT DOES NOT INCLUDE CLUBS IN UNDISTRICTED AREAS.

Clubs				Members			
RESULTS FOR 2024-2025				RESULTS FOR 2024-2025			
QUARTER	NEW CLUB GOAL	NEW CLUBS	DROPPED CLUBS	QUARTER	MEMBER GROWTH NET GOAL	MEMBER GROWTH ACTUAL	DROPPED MEMBERS ACTUAL (including transfers)
JULY/AUG/SEPT	8	4	3	JULY/AUG/SEPT	1,850	2,829	1,555
OCT/NOV/DEC	11	3	1	OCT/NOV/DEC	1,994	1,061	757
JAN/FEB/MAR	23	0	0	JAN/FEB/MAR	1,787	0	0
APR/MAY/JUNE	11	0	0	APR/MAY/JUNE	1,271	0	0

**GOALS AND ACTUAL NEW CLUBS CUMULATIVE**



**GOALS AND ACTUAL MEMBERS CUMULATIVE**



<b>DROPPED CLUBS: 4</b>	1,395 CLUBS OF 2,708 ADDED 1 OR MORE NEW MEMBERS	<b><u>GENDER DISTRIBUTION</u></b> MALE                    72,723 (77.38%) FEMALE                 21,242 (22.60%)
<b><u>DROPPED MEMBERS</u></b> DECEASED                    296 CLUB CANCELLED                 1 OTHER                            1,898 <hr/> TOTAL                            2,195	<a href="#">CLICK HERE FOR CUMULATIVE MEMBERSHIP DATA</a>	TOTAL FAMILY UNIT MEMBERS                    0  FAMILY MEMBERS PAYING HALF DUES                    0